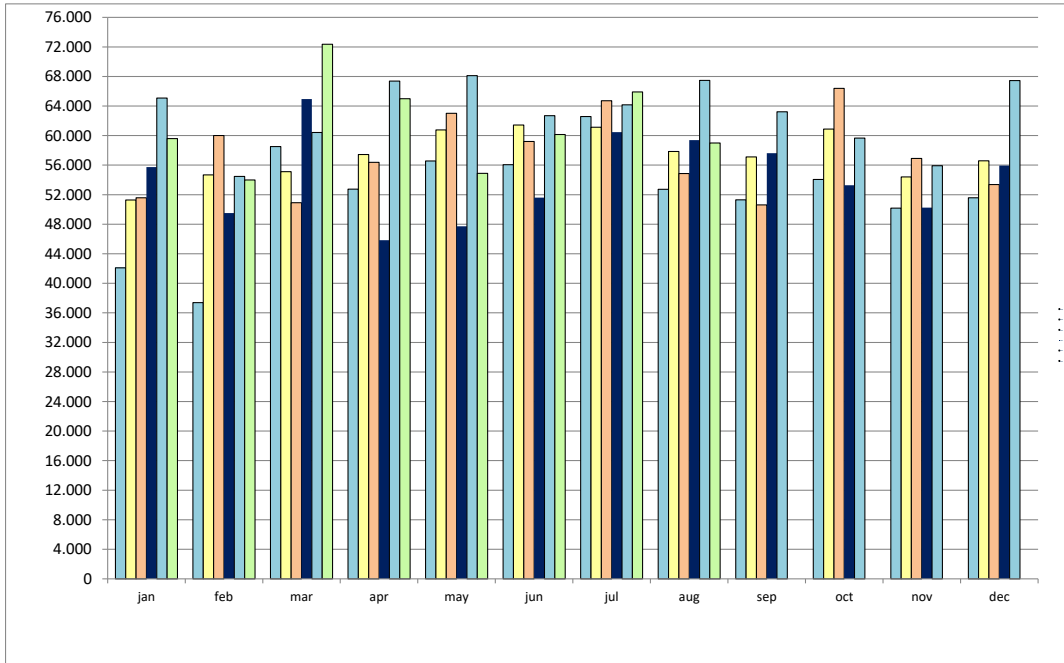


STATISTICS: MONTHLY TREND 2003 - 2023 IN TEUs



TOTAL VOLUMES

2023
UP TO AUGUST
490.835

2022
UP TO AUGUST
509.721

2021
UP TO AUGUST
435.235

2020
UP TO AUGUST
460.660

2019
UP TO AUGUST
459.659

2018
UP TO AUGUST
418.657

TEU	jan	feb	mar	apr	may	jun	jul	aug	sep	oct	nov	dec	UP TO AUGUST
2003	10.011	9.744	11.166	10.359	9.511	9.958	8.840	8.783	9.842	9.825	9.082	11.021	78.372
2009	23.536	25.294	20.199	23.697	25.043	25.113	24.861	25.868	20.379	20.127	23.292	19.836	193.611
2010	18.161	22.315	25.380	25.434	30.041	25.228	26.416	20.071	21.149	20.699	23.641	23.094	193.046
2011	23.053	29.163	29.106	32.173	23.410	36.563	36.669	40.338	36.782	38.959	32.657	34.322	250.475
2012	33.662	29.988	35.681	32.580	34.755	39.076	39.651	30.199	30.596	34.206	35.175	35.678	275.592
2013	31.780	34.539	42.217	45.007	38.962	41.295	43.560	35.280	36.098	34.263	35.894	39.602	312.640
2014	32.016	35.820	44.974	41.871	41.956	41.104	42.715	41.489	36.674	41.965	39.731	36.192	321.945
2015	33.576	34.683	38.874	35.211	39.091	33.491	47.044	38.386	42.935	33.717	36.429	30.445	300.356
2016	29.086	38.314	47.048	39.218	36.073	37.815	37.465	41.173	32.455	35.835	37.340	37.659	306.192
2017	36.516	40.412	51.895	47.585	45.783	50.008	47.218	46.482	45.017	44.885	44.426	46.434	365.898
2018	42.097	37.384	58.523	52.738	56.554	56.045	62.586	52.730	51.305	54.057	50.174	51.574	418.657
2019	51.281	54.681	55.109	57.443	60.751	61.431	61.120	57.843	57.103	60.883	54.410	56.594	459.659
2020	51.570	60.015	50.923	56.373	63.002	59.198	64.719	54.860	50.607	66.379	56.915	53.360	460.660
2021	55.736	49.512	64.944	45.846	47.731	51.611	60.464	59.391	57.626	53.270	50.245	55.943	435.235
2022	65.068	54.461	60.429	67.367	68.101	62.686	64.149	67.460	63.208	59.650	55.918	67.435	509.721
2023	59.589	53.979	72.354	64.987	54.878	60.133	65.914	59.002					490.835
% 2009 vs 2003	135,10	159,59	80,90	128,76	163,31	152,19	181,23	194,52	107,06	104,85	156,46	79,98	147,04
% 2010 vs 2009	-22,84	-11,78	25,65	7,33	19,96	0,46	6,25	-22,41	3,78	2,84	1,50	16,42	-0,29
% 2011 vs 2010	26,94	30,69	14,68	26,50	-22,07	44,93	38,81	100,98	73,92	88,22	38,14	48,62	29,75
% 2012 vs 2011	46,02	2,83	22,59	1,27	48,46	6,87	8,13	-25,14	-16,82	-12,20	7,71	3,95	10,03
% 2013 vs 2012	-5,59	15,18	18,32	38,14	12,10	5,68	9,86	16,83	17,98	0,17	2,04	11,00	13,44
% 2014 vs 2013	0,74	3,71	6,53	-6,97	7,68	-0,46	-1,94	17,60	1,60	22,48	10,69	-8,61	2,98
% 2015 vs 2014	4,87	-3,18	-13,56	-15,91	-6,83	-18,52	10,13	-7,48	17,07	-19,65	-8,31	-15,88	-6,71
% 2016 vs 2015	-13,37	10,47	21,03	11,38	-7,72	12,91	-20,36	7,26	-24,41	6,28	2,50	23,70	1,94
% 2017 vs 2016	25,54	5,48	10,30	21,33	26,92	32,24	26,03	12,89	38,71	25,25	18,98	23,30	19,50
% 2018 vs 2017	15,29	-7,49	12,77	10,83	23,53	12,07	32,55	13,44	13,97	20,43	12,94	11,07	14,42
% 2019 vs 2018	21,82	46,27	-5,83	8,92	7,42	9,61	-2,34	9,70	11,30	12,63	8,44	9,73	9,79
% 2020 vs 2019	0,56	9,75	-7,60	-1,86	3,71	-3,63	5,89	-5,16	-11,38	9,03	4,60	-5,71	0,22
% 2021 vs 2020	8,08	-17,50	27,53	-18,67	-24,24	-12,82	-6,57	8,26	13,87	-19,75	-11,72	4,84	-5,52
% 2022 vs 2021	16,74	10,00	-6,95	46,94	42,68	21,46	6,09	13,59	9,69	11,98	11,29	20,54	17,11
% 2023 vs 2022	-8,42	-0,89	19,73	-3,53	-19,42	-4,07	2,75	-12,54					-3,71